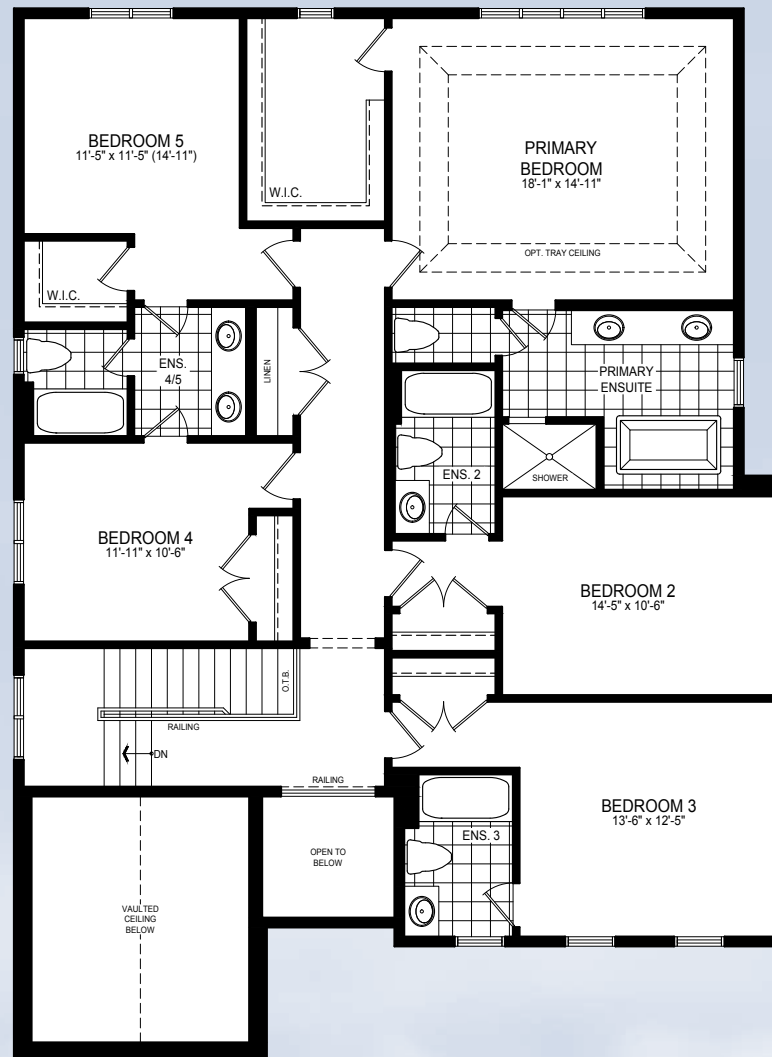
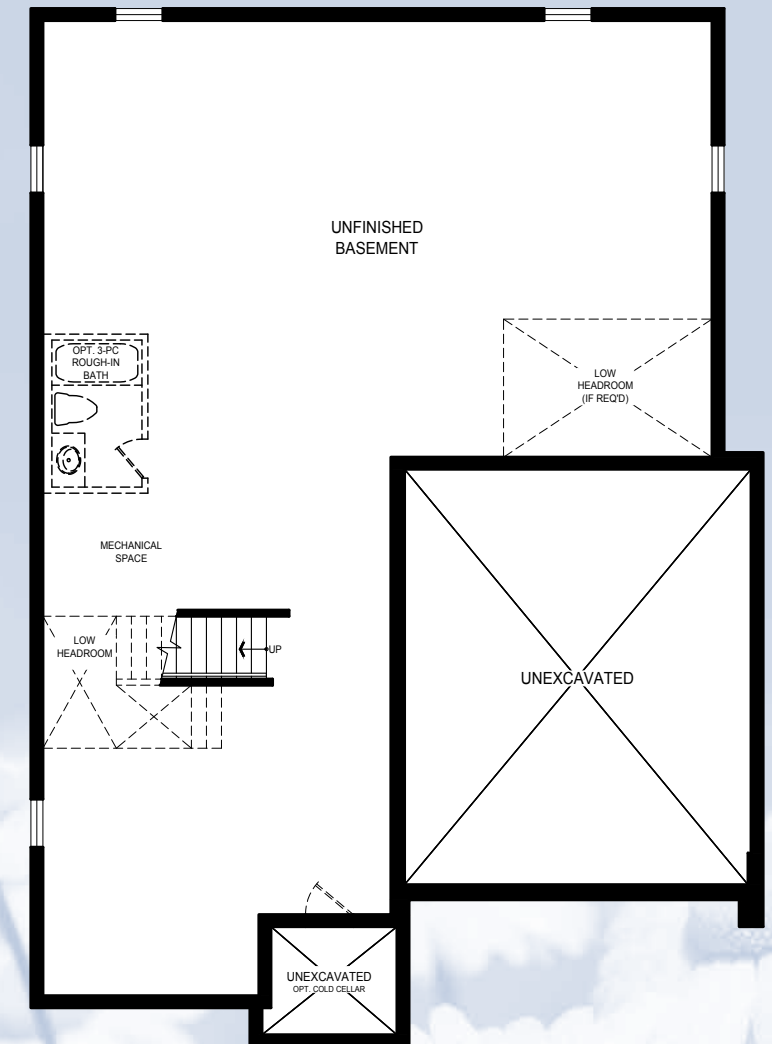


Ground Floor
Elevation A



Second Floor
Elevation A



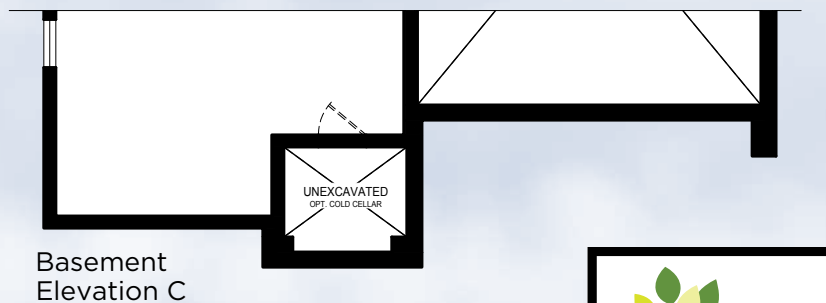
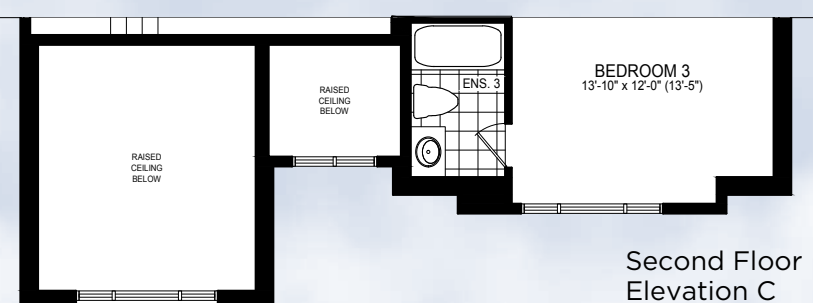
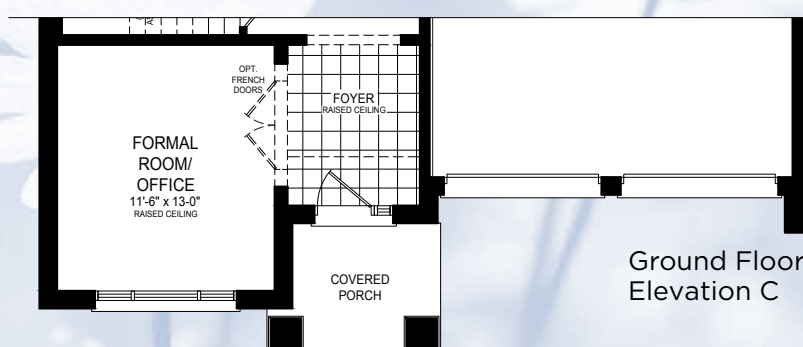
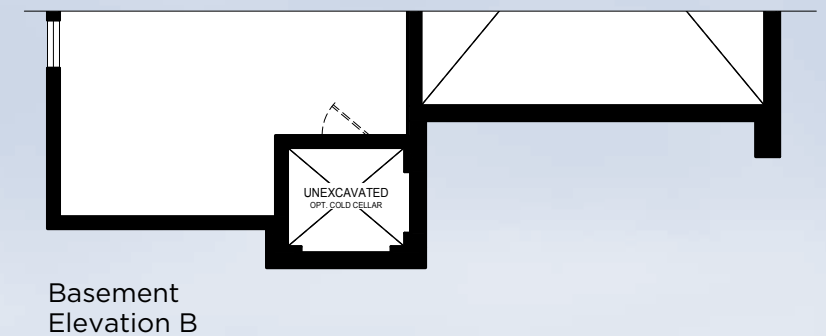
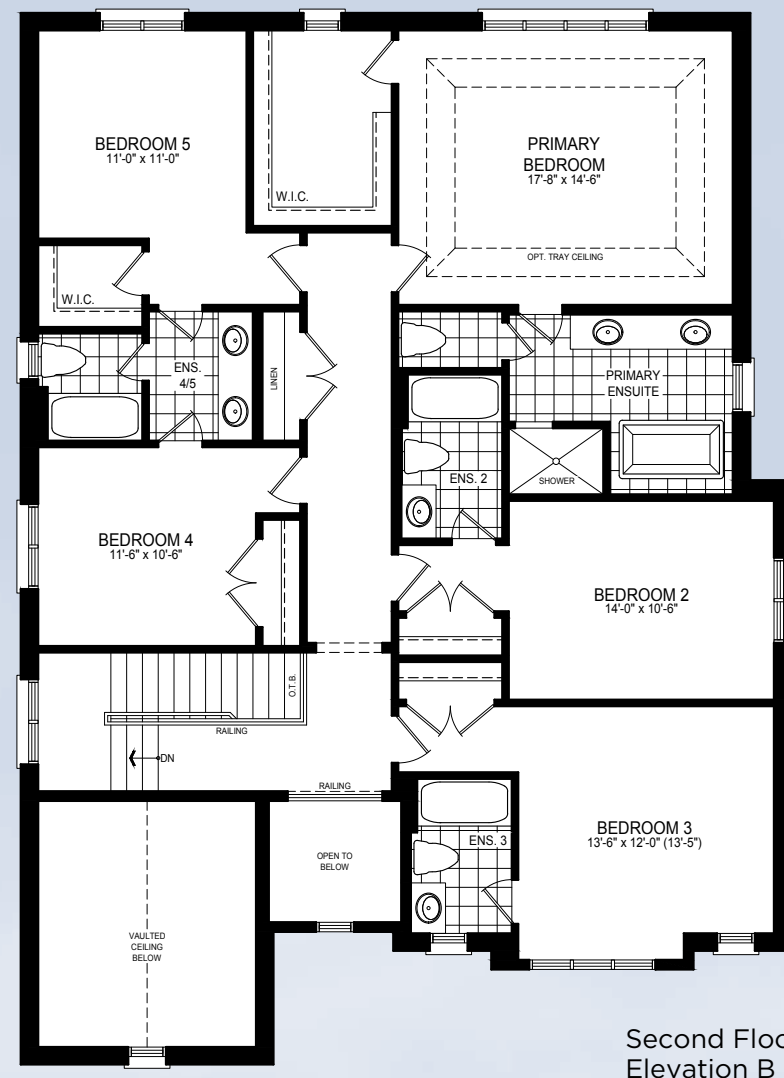
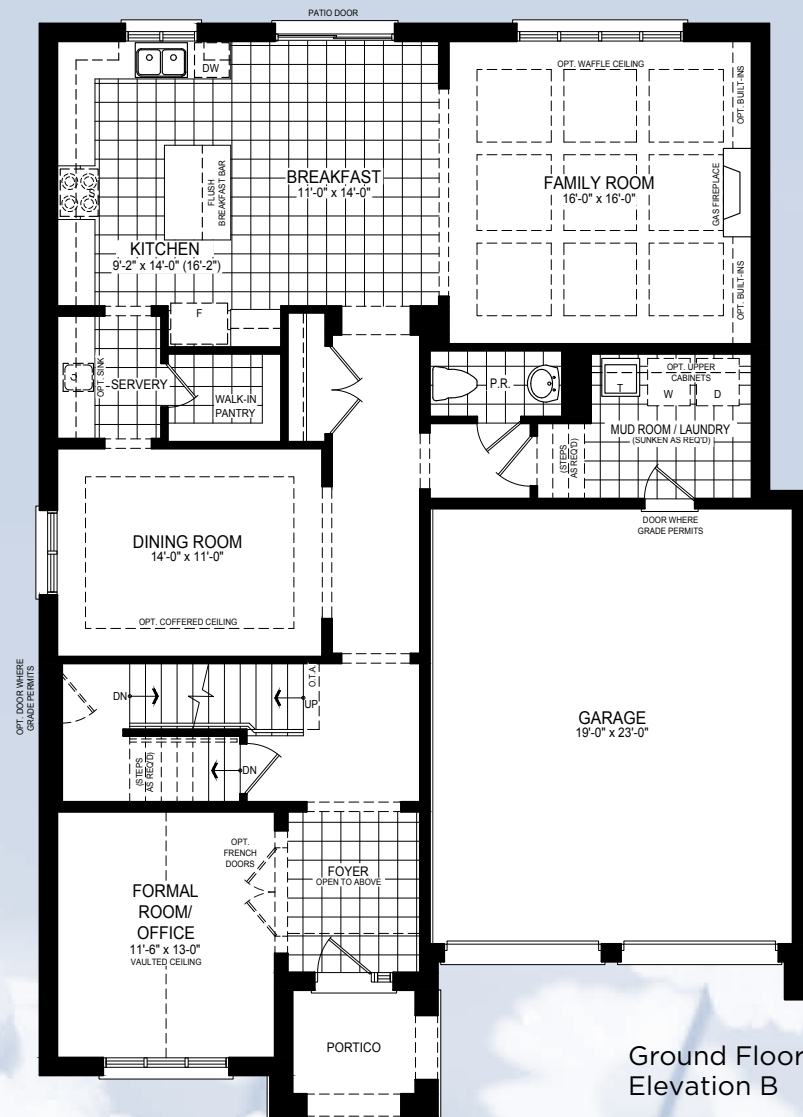
Basement
Elevation A

The Kingsbury

3384-3385 SQ.FT.
ELEVATION B & C



50 FT.



The floor plans and elevations shown are pre-construction plans and may be revised or improved as necessitated by architectural controls and the construction process. The measurements adhere to the rules and regulations of the TARIION Warranty Corporation's official method for the calculation of floor area. Actual usable floor space may vary from the stated floor area. Railings on front porch only where required by O.B.C. All inside coffered ceiling and heights are approximate. All images and landscaping are artist's concept only and not indicative of what purchaser is actually getting. E. & O. E. November 2025 50-5

